

SP-TM06WP Mirco SD Card Installation

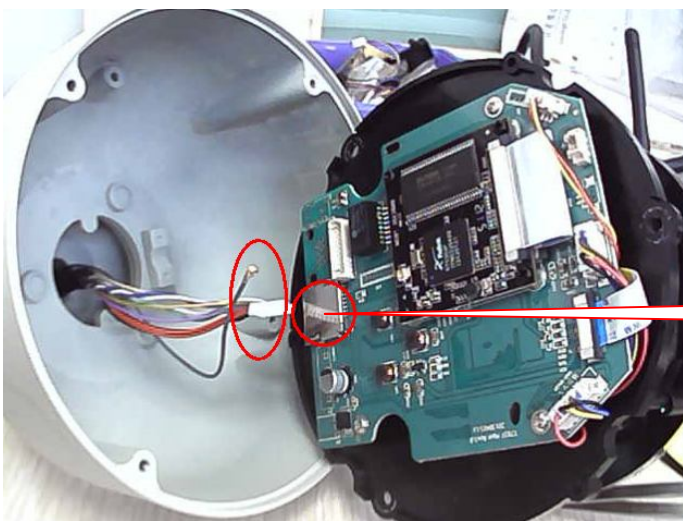
1.Firstly unscrew the 4pcs screws from the front cover,as pics below,take the metal cover off.



2.then insdie the camera you will see 3pcs screws,unscrew them like the pics below (the three screw which is inside,which connect with the bottom).



3.take carefully the board out,,(very carfully,,)then you will easy to find the micro sd card slot on the pcb board.



Tf slot