

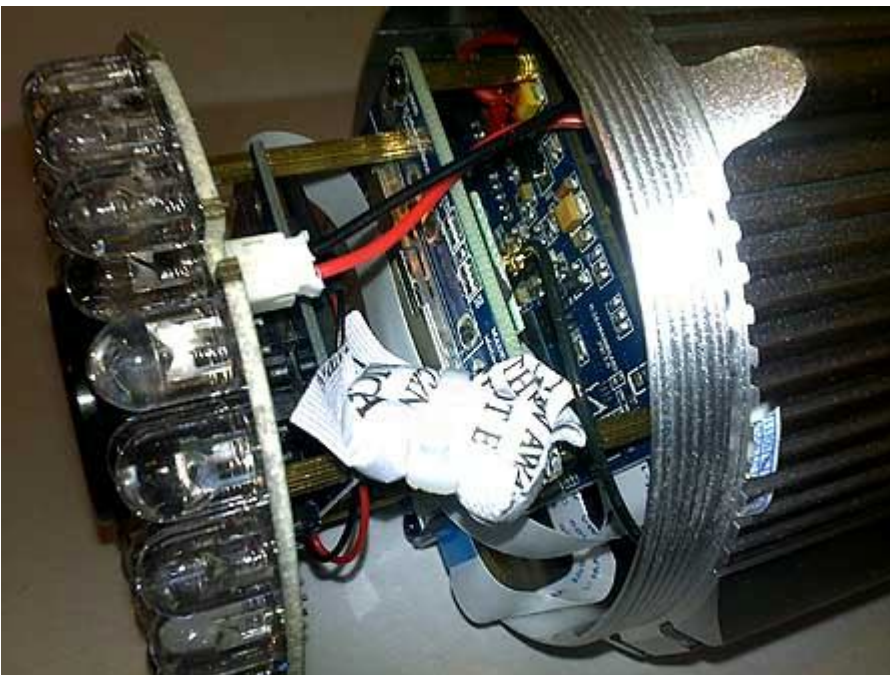
SunEyes SP-H03W add SD Card into it.

You must purchase a SD card (the camera supports a maximum volume of 32 Gb), you also can purchase the SD Card from us, then we will help u to insert the sd card into it before shipment.

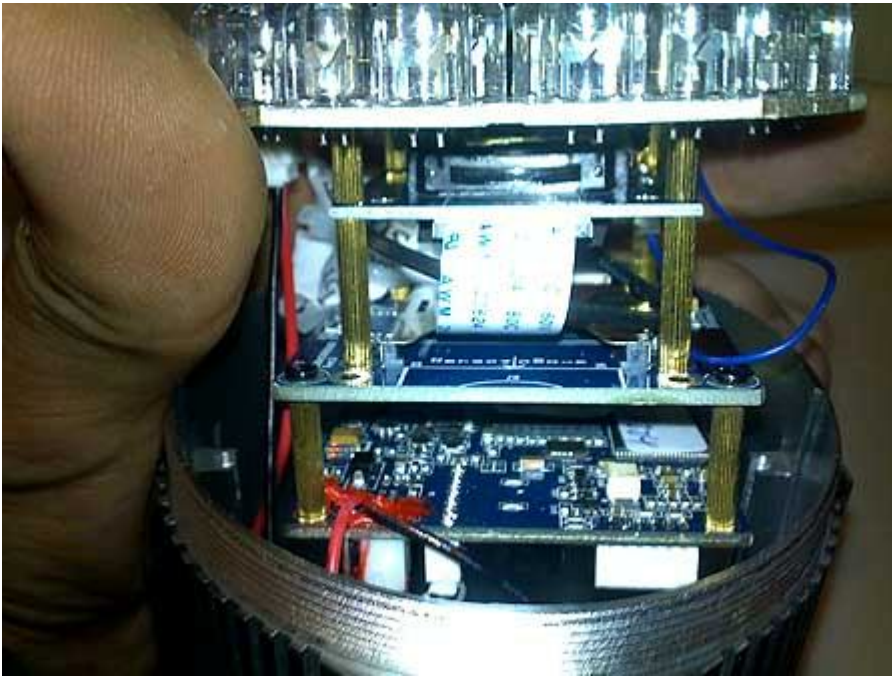
Unscrew the four screws:



With caution taken out of the housing main circuit board:



In the middle of the circuit board connector shows the memory card slot:



How to insert a memory card format SD / MMC into the camera SunEyes SP-H03W? Like this:



Memory card SD card has been successfully installed in the connector