

PC Software Settings Instruction

1. Install the wifi antenna on the camera, and connect the power adaptor to the camera's DC output.

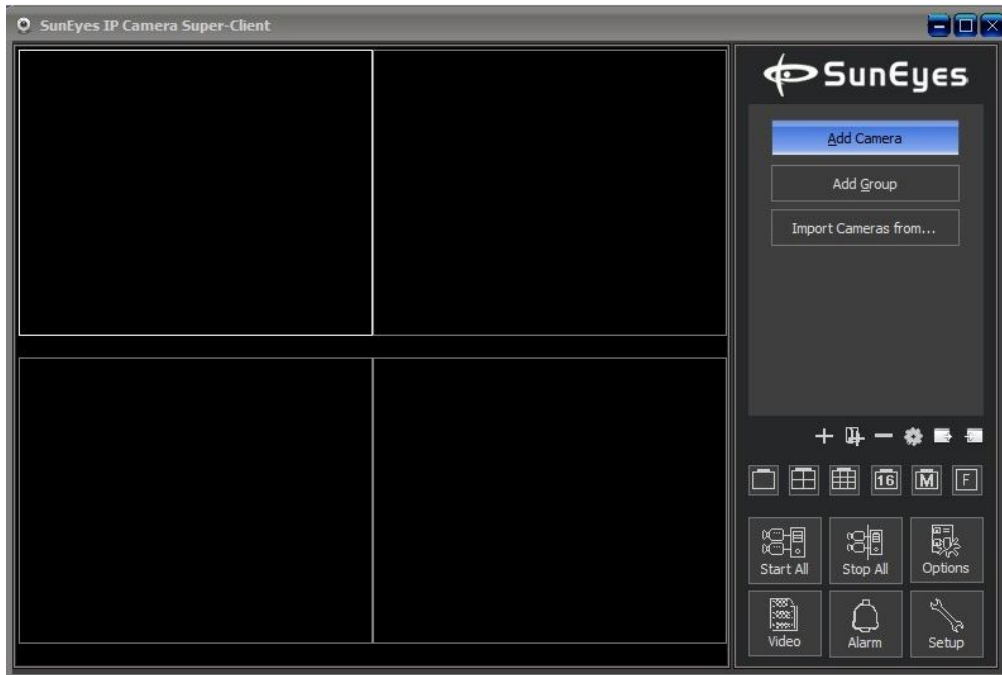


2. Connect the camera to router via network cable.

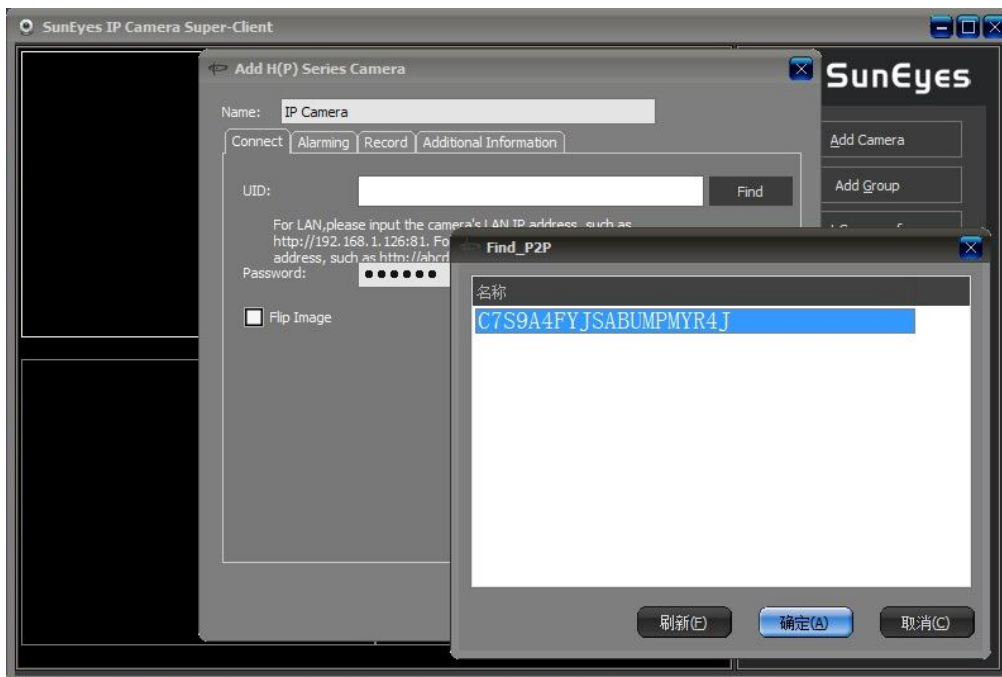




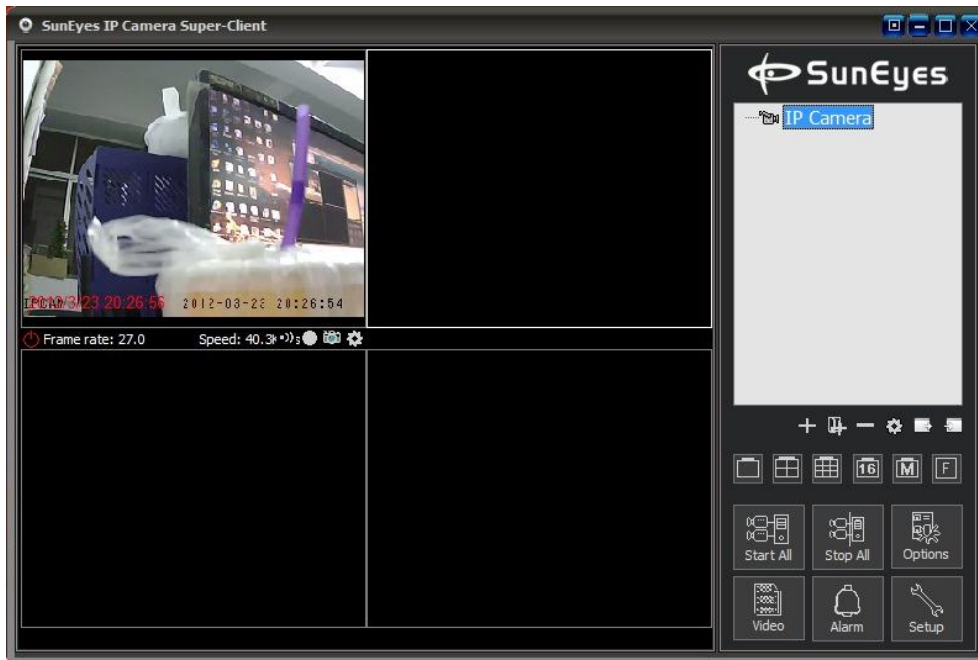
3. Install the software **SunEyes IP Camera Super Client** of SunEyes IP Camera Super Client (the software is in the Disc) on your computer.



4. Add Camera: you can **Find** the UID code from LAN, Make sure your Computer and Camera in the same LAN Network (if in outside public network you can copy the UID code from the Camera labels Manually)



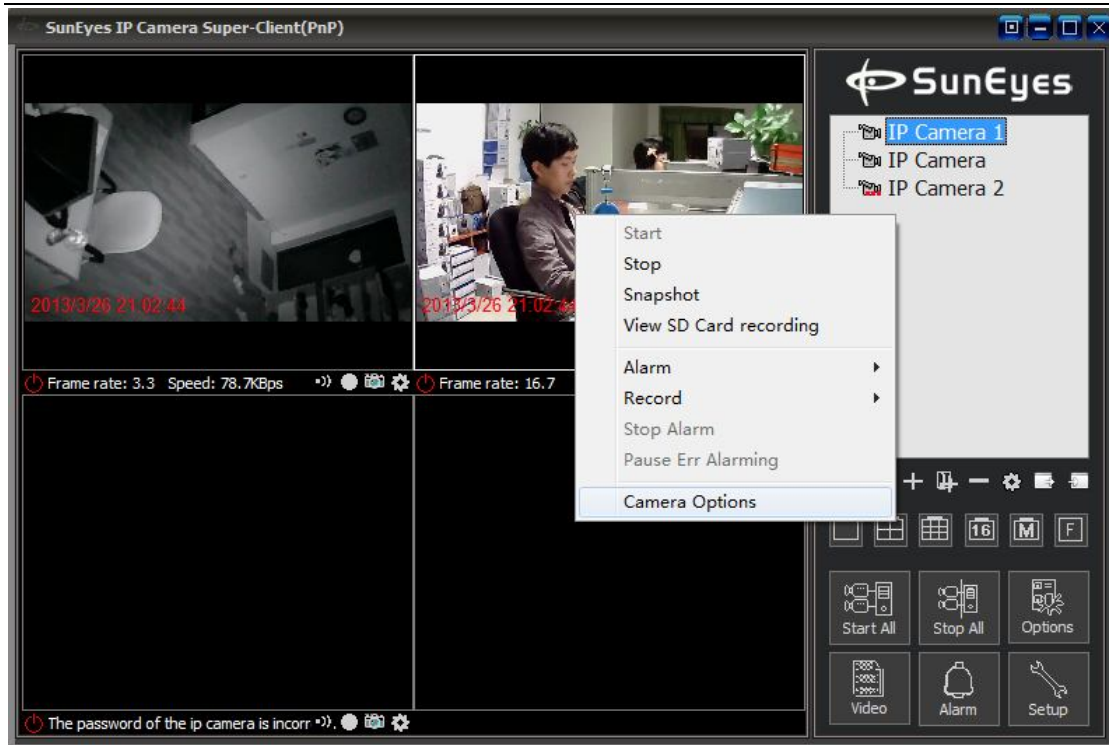
5. Enter the Password (the Defaulted Password is 888888), then you can see the video .



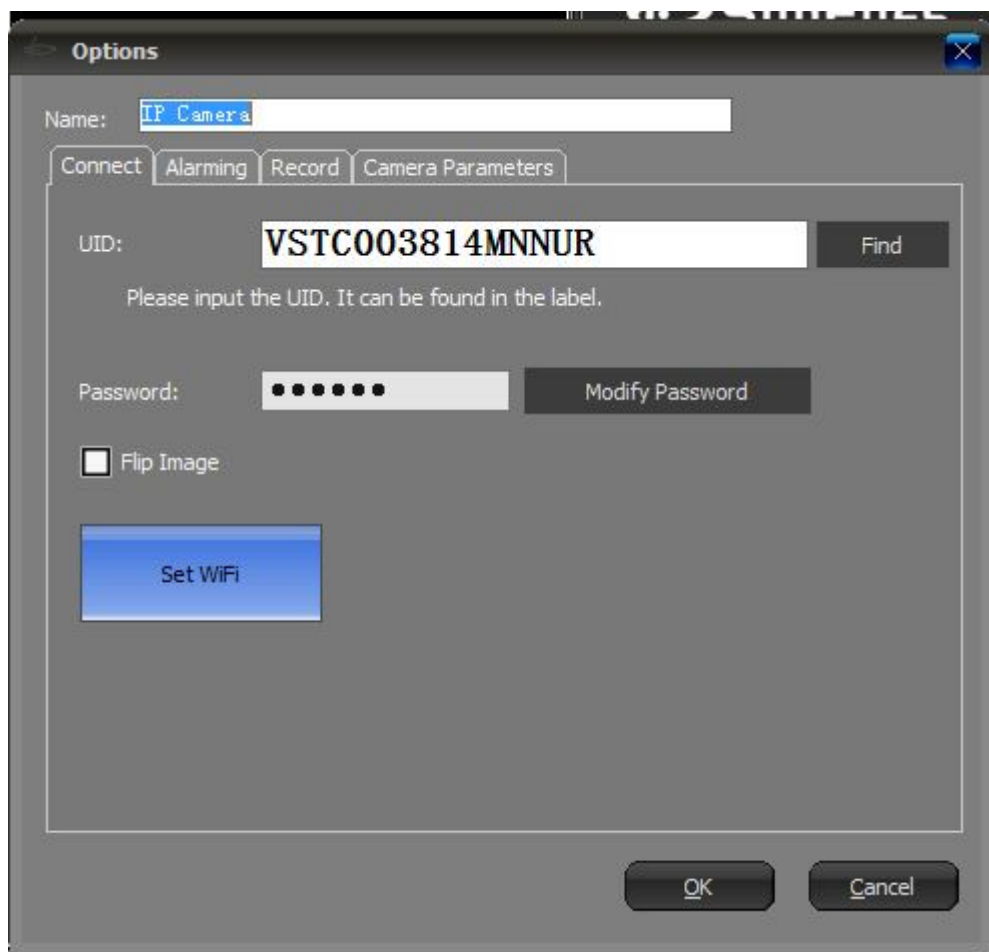
6. Left Click the video there will appear the Pan/Tilt Control Panel.



7. Setting the Wifi , right click the video windows, and chose camera options.



8.Click the Set Wifi Button



Search Signals, and chose your wifi SSID, then click Set, enter your wifi password, will be ok:

