

## Firmware Upgrade

Before to upgrade the firmware,pls make sure  
your camera has connect to LAN router with Cable.

1. Download app upgrade tool from the link:  
<http://suneyesgroup.com/download/app-Upgrade.exe> ,open the



tool:

The upgrade software for IP Cam, Version1.1

The upgrade software for IP Cam Version1.1, Upgrade UI rom and system rom automatically by using this tool.UI rom is a package consisting functions used for interactive between users and IP Cam.System rom is a package consisting basic and important functions IP Cam provided.Notice: Upgrading is risky, if having something unclear,please contact to our tech support---

IP Cam Type:  Account:  Password:

Use the IP address to Upgrade rom | Use the device code to upgrade rom |

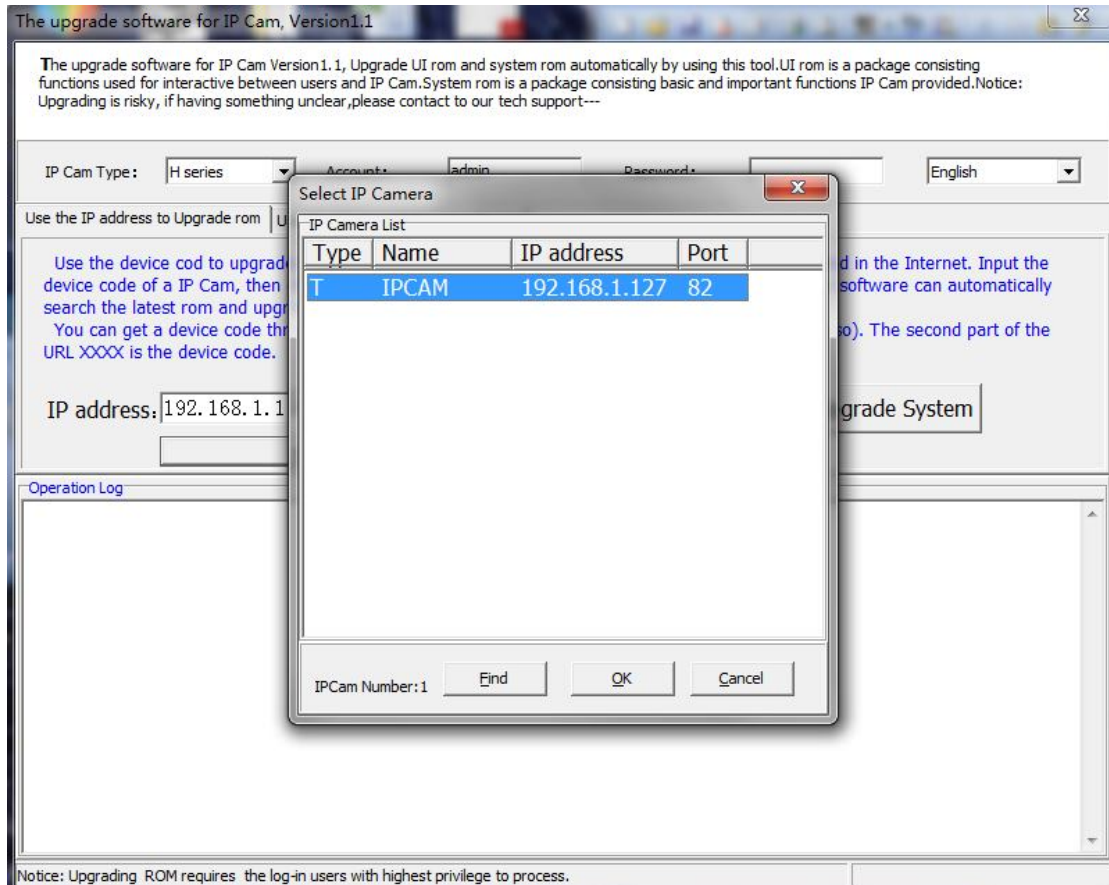
Use the device cod to upgrade rom, this method is used for the IP Cam which is located and worked in the Internet. Input the device code of a IP Cam, then click "Upgrade UI ROM" button or "Upgrade system ROM" button.This software can automatically search the latest rom and upgrade.  
You can get a device code through checking the IP Cam's label or website(like <http://XXXX.IPcam.so>). The second part of the URL XXXX is the device code.


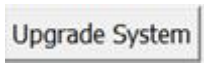
IP address:  Port:

Operation Log

Notice: Upgrading ROM requires the log-in users with highest privilege to process.

2. Click the button of “  ”



3.fine the camera IP and enter your camera password,then click  or  , then the camera can upgrade automaticly.

The upgrade software for IP Cam, Version1.1

The upgrade software for IP Cam Version1.1, Upgrade UI rom and system rom automatically by using this tool.UI rom is a package consisting functions used for interactive between users and IP Cam.System rom is a package consisting basic and important functions IP Cam provided.Notice: Upgrading is risky, if having something unclear,please contact to our tech support---

IP Cam Type:  Account:  Password:

Use the IP address to Upgrade rom | Use the device code to upgrade rom

Use the device cod to upgrade rom, this method is used for the IP Cam which is located and worked in the Internet. Input the device code of a IP Cam, then click "Upgrade UI ROM" button or "Upgrade system ROM" button.This software can automatically search the latest rom and upgrade.  
You can get a device code through checking the IP Cam's label or website(like <http://XXXX.IPcam.so>). The second part of the URL XXXX is the device code.

IP address:  Port:

Operation Log

```

2013/3/26 20:33:26:Device connected normally
2013/3/26 20:33:26:The version of present device rom is :TH2.0.1.13
2013/3/26 20:33:27:The version of latest device rom is :TH2.0.1.13
2013/3/26 20:33:37:Downloading rom for upgrading...
2013/3/26 20:33:40:Begin to upgrade device's rom, please hold the connection of the device normally.
2013/3/26 20:33:43:Successfully upgrade ROM, it is going to reboot the device, please wait.....
    
```

Notice: Upgrading ROM requires the log-in users with highest privilege to process.

The upgrade software for IP Cam, Version1.1

The upgrade software for IP Cam Version1.1, Upgrade UI rom and system rom automatically by using this tool.UI rom is a package consisting functions used for interactive between users and IP Cam.System rom is a package consisting basic and important functions IP Cam provided.Notice: Upgrading is risky, if having something unclear,please contact to our tech support---

IP Cam Type:  Account:  Password:

Use the IP address to Upgrade rom | Use the device code to upgrade rom

Use the device cod to upgrade rom, this method is used for the IP Cam which is located and worked in the Internet. Input the device code of a IP Cam, then click "Upgrade UI ROM" button or "Upgrade system ROM" button.This software can automatically search the latest rom and upgrade.  
You can get a device code through checking the IP Cam's label or website(like <http://XXXX.IPcam.so>). The second part of the URL XXXX is the device code.

IP address:  Port:

Operation Log

```

2013/3/26 20:33:26:Device connected normally
2013/3/26 20:33:26:The version of present device rom is :TH2.0.1.13
2013/3/26 20:33:27:The version of latest device rom is :TH2.0.1.13
2013/3/26 20:33:37:Downloading rom for upgrading...
2013/3/26 20:33:40:Begin to upgrade device's rom, please hold the connection of the device normally.
2013/3/26 20:33:43:Successfully upgrade ROM, it is going to reboot the device, please wait.....
2013/3/26 20:34:56:IP Cam is Working!
2013/3/26 20:41:08:Device connected normally
2013/3/26 20:41:08:The version of present device rom is :48.2.64.170
2013/3/26 20:41:08:The version of latest device rom is :48.2.64.170
2013/3/26 20:41:10:Downloading rom for upgrading...
2013/3/26 20:41:13:Begin to upgrade device's rom, please hold the connection of the device normally.
    
```

Notice: Upgrading ROM requires the log-in users with highest privilege to process.